



repertório

archive selected pieces

- whole body of items that are regularly performed.
- stock of skills or types that a person habitually uses.

By revisiting key archival pieces, this approach shapes the brand language, telling a story rooted in the brand's foundations while hinting at what's next.

SS26

mariacarlosbaptista

Photo and video Dulce Daniel and Luís Pedro Ferreira
Hair and make up Catarina Albano
Model Nastya Cherkasova



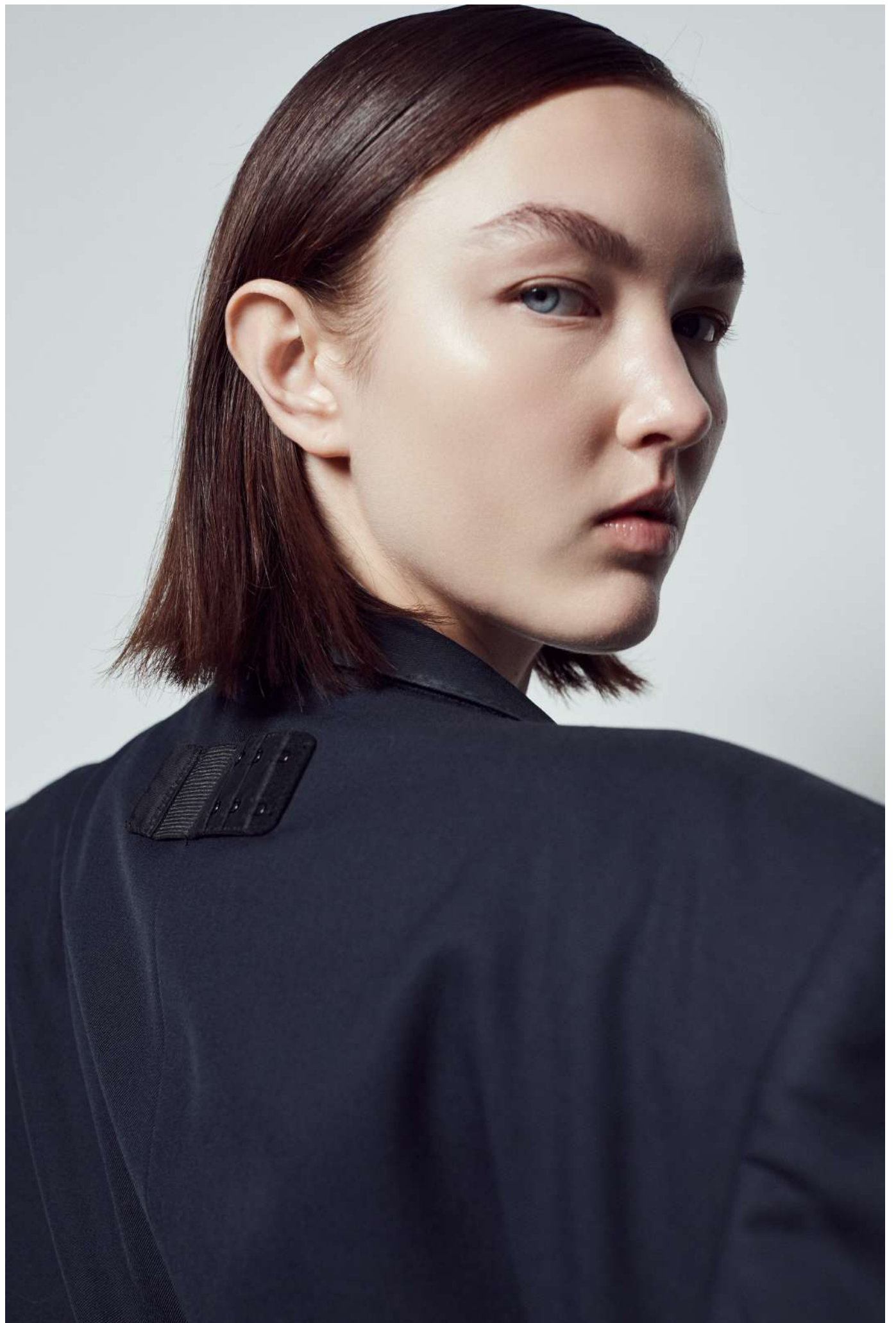


mariacarlosbaptista



Nastya wears
blue upcycled vest SS'22 layered with corset sleeves AW'19 with matching suit pants SS'25.





Nastya wears
blue upcycled asymmetric wool classic jacket AW'20 layered with a draped blue wool dress SS'25 and wool grey suit pants AW'19.





















mariacarlosbaptista











Nastya wears
black asymmetric wool blazer AW'25 layered with asymmetric black dress as a turtleneck AW'25.









Nastya wears
black shirtdress AW'25 paired with pleated black skirt and pants SS'25.





A studio portrait of a woman with light skin, blue eyes, and dark hair pulled back. She is wearing a black, strapless, form-fitting top. The background is a plain, light-colored wall. The lighting is soft and directional, coming from the upper left, creating subtle shadows on her face and shoulders. The text 'mariacarlosbaptista' is centered over her chest in a white, lowercase, serif font.

mariacarlosbaptista