

aenaO

SS24

aenaoclothes

.Do mermaids exist?





Pink island

pink

The myth says that the treasure
is on the island...but the island
has mermaids.

Polo shirt

Polo collar.

Short sleeve.

Gold-toned metal buttons.

Size:
s/m-m/l.

Material:
Cotton 97% El 3%.

Handmade pattern design.

Each piece of clothing has a unique design since
the placement of the design differs on each garment.

The model is 180 cm and is wearing a size S.





Skirt

Long skirt.

Straight design.

Concealed zip fastening at back.

Front slit.

Size:

s-m-l.

Material:

Cotton 97% El 3%.

Handmade pattern design.

Each piece of clothing has a unique design since the placement of the design differs on each garment.

The model is 180 cm and is wearing a size S.



Top V

V-Shaped neckline.

Button- fastening keyhole at back.

Gold-toned metal button.

Size:
s/m-m/l.

Material:
Cotton 97% El 3%.

Handmade pattern design.

Each piece of clothing has a unique design since
the placement of the design differs on each garment.

The model is 180 cm and is wearing a size S.



Trousers

Concealed zip.

One gold-toned
metal button fastening.

Loops.

Side slit pockets.

High waist.

Inner slit on the bottom.

Size: s-m-l.

Material:
Cotton 97% El 3%.

Handmade pattern design.

Each piece of clothing has a unique
design since the placement
of the design differs on each garment.

The model is 180 cm and is wearing
a size S.





Long Sleeve Shirt

Shirt-style collar.

Long sleeve with buttoned cuffs.

Button fastening on the front section.

Gold-toned metal buttons.

Size:
s/m-m/l.

Material:
Cotton 97% El 3%.

Handmade pattern design.

Each piece of clothing has a unique design since the placement of the design differs on each garment.

The model is 180 cm and is wearing a size S.





Zip Dress

Collar neckline.

Zip fastening at front.

Close fit at the waist .

Size:
s-m-l.

Material:
Cotton 97% El 3%.

Handmade pattern design.

Each piece of clothing has a unique design since the placement of the design differs on each garment.

The model is 180 cm and is wearing a size S.



Strapless Dress

Concealed zip fastening
at back.

Close fit at the waist .

Back slit.

Size:
s-m-l.

Material:
Cotton 97% El 3%.

Handmade pattern design.

Each piece of clothing has a unique design since
the placement of the design differs on each garment.

The model is 180 cm and is wearing a size S.



Dress

Low cut V-Shaped neckline.

Halterneck design.

Concealed zip fastening at back.

Close fit at the waist .

Back slit.

Size: s-m-l.

Material:

Cotton 97%E1 3%.

Handmade pattern design.

Each piece of clothing has a unique design since the placement of the design differs on each garment.

The model is 180 cm and is wearing a size S.



Shorts

Elasticated waistband.

Loose fit.

Size:
s/m-m/l.

Material:
Cotton 97% El 3%.

Handmade pattern design.

Each piece of clothing has a unique design since the placement of the design differs on each garment.

The model is 180 cm and is wearing a size S.



Tiny Top

V-Shaped neckline.

Button fastening on the back section.

Gold-toned metal buttons.

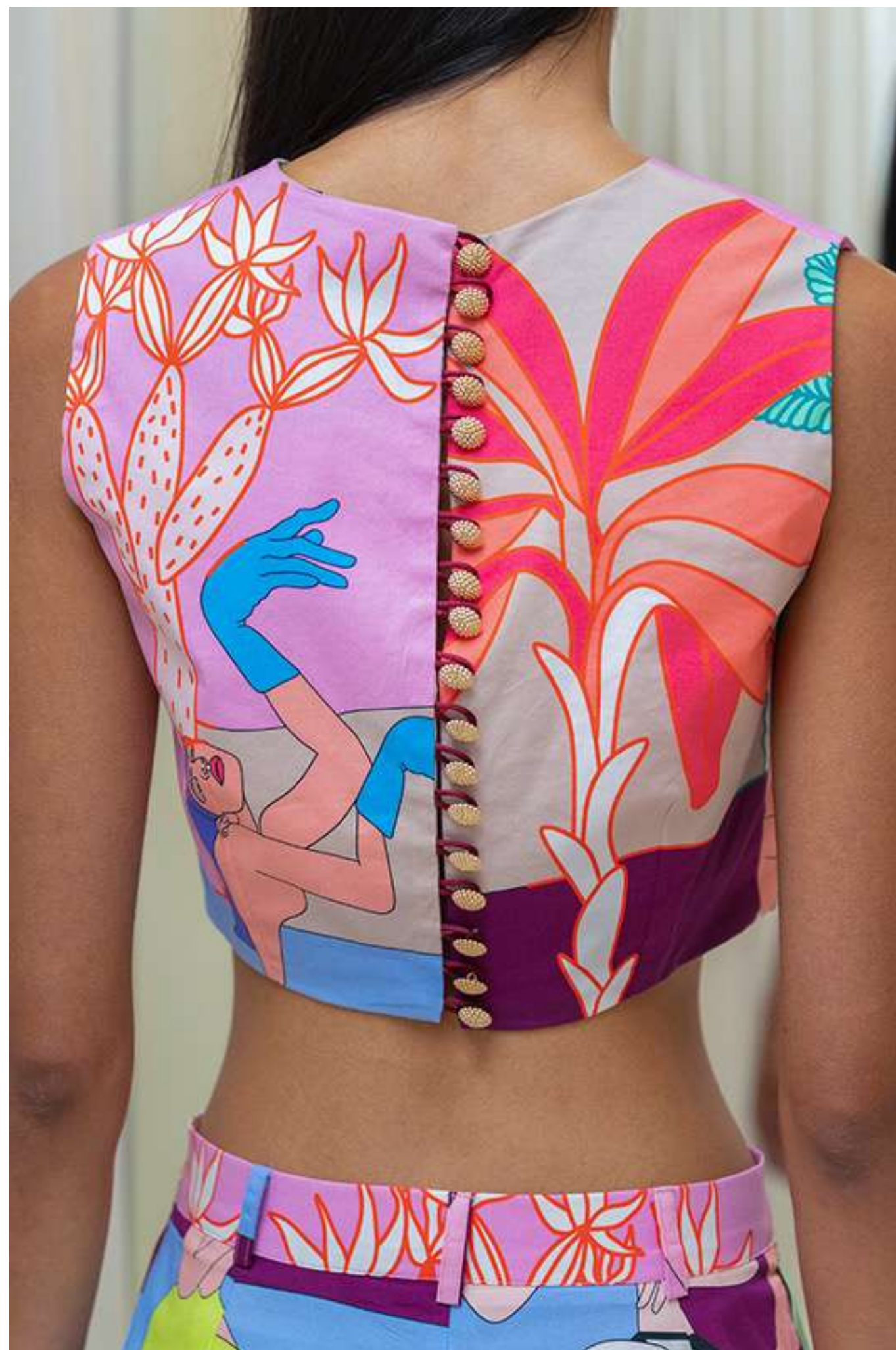
Size:
s-m-l.

Material:
Cotton 97% El 3%.

Handmade pattern design.

Each piece of clothing has a unique design since the placement of the design differs on each garment.

The model is 180 cm and is wearing a size S.



Playsuit

Low cut V-Shaped neckline.

Concealed zip fastening at front.

Slim fit.

Size:
s-m-l.

Material:
Cotton 97% El 3%.

Handmade pattern design.

Each piece of clothing has a unique design since
the placement of the design differs on each garment.

The model is 180 cm and is wearing a size S.



Shirt Dress

Shirt-style collar.

Long sleeve with buttoned cuffs.

Button-fastenings through front.

Gold-toned metal buttons.

Loose fit.

Size:
s/m-m/l.

Material:
Cotton 97% El 3%.

Handmade pattern design.

Each piece of clothing has a unique design since the placement of the design differs on each garment.

The model is 180 cm and is wearing a size S.





Kimono

Low cut V-Shaped neckline.

Button-fastenings through front.

Gold-toned metal buttons.

Side slits.

Size:
s/m-m/l.

Material:
Cotton 97% El 3%.

Handmade pattern design.

Each piece of clothing has a unique design since the placement of the design differs on each garment.

The model is 180 cm and is wearing a size S.







Three yellow

When you have company do
you need
to talk? If you talk,
does that
mean you have company?

Polo shirt

Polo collar.

Short sleeve.

Gold-toned metal buttons.

Size:
s/m-m/l.

Material:
Cotton 97% El 3%.

Handmade pattern design.

Each piece of clothing has a unique design since
the placement of the design differs on each garment.

The model is 180 cm and is wearing a size S.





Skirt

Long skirt.

Straight design.

Concealed zip fastening at back.

Front slit.

Size:

s-m-l.

Material:

Cotton 97% El 3%.

Handmade pattern design.

Each piece of clothing has a unique design since the placement of the design differs on each garment.

The model is 180 cm and is wearing a size S.



Top V

V-Shaped
neckline.

Button- fastening keyhole at back.

Gold-toned metal button.

Size:
s/m-m/l.

Material:
Cotton 97% El 3%.

Handmade pattern design.

Each piece of clothing has a unique design since
the placement of the design differs on each garment.

The model is 180 cm and is wearing a size S.



Trousers

Concealed zip.

One gold-toned
metal button fastening.

Loops.

Side slit pockets.

High waist.

Inner slit on the bottom.

Size: s-m-l.

Material:
Cotton 97% El 3%.

Handmade pattern design.

Each piece of clothing has a unique
design since the placement
of the design differs on each garment.

The model is 180 cm and is wearing
a size S.



Long Sleeve Shirt

Shirt-style collar.

Long sleeve with buttoned cuffs.

Button fastening on the front section.

Gold-toned metal buttons.

Size:
s/m-m/l.

Material:
Cotton 97% El 3%.

Handmade pattern design.

Each piece of clothing has a unique design since the placement of the design differs on each garment.

The model is 180 cm and is wearing a size S.



Zip Dress

Collar neckline.

Zip fastening at front.

Close fit at the waist .

Size:

s-m-l.

Material:

Cotton 97% El 3%.

Handmade pattern design.

Each piece of clothing has a unique design since the placement of the design differs on each garment.

The model is 180 cm and is wearing a size S.



Strapless Dress

Concealed zip fastening
at back.

Close fit at the waist .

Back slit.

Size:
s-m-l.

Material:
Cotton 97% El 3%.

Handmade pattern design.

Each piece of clothing has a unique design since
the placement of the design differs on each garment.

The model is 180 cm and is wearing a size S.



Dress

Low cut V-Shaped neckline.

Halterneck design.

Concealed zip fastening at back.

Close fit at the waist .

Back slit.

Size: s-m-l.

Material:

Cotton 97%E1 3%.

Handmade pattern design.

Each piece of clothing has a unique design since the placement of the design differs on each garment.

The model is 180 cm and is wearing a size S.



Shorts

Elasticated waistband.

Loose fit.

Size:
s/m-m/l.

Material:
Cotton 97% El 3%.

Handmade pattern design.

Each piece of clothing has a unique design since the placement of the design differs on each garment.

The model is 180 cm and is wearing a size S.



Tiny Top

V-Shaped neckline.

Button fastening on the back section.

Gold-toned metal buttons.

Size:
s-m-l.

Material:
Cotton 97% El 3%.

Handmade pattern design.

Each piece of clothing has a unique design since the placement of the design differs on each garment.

The model is 180 cm and is wearing a size S.



Playsuit

Low cut V-Shaped neckline.

Concealed zip fastening at front.

Slim fit.

Size:
s-m-l.

Material:
Cotton 97% El 3%.

Handmade pattern design.

Each piece of clothing has a unique design since
the placement of the design differs on each garment.

The model is 180 cm and is wearing a size S.



Shirt Dress

Shirt-style collar.

Long sleeve with buttoned cuffs.

Button-fastenings through front.

Gold-toned metal buttons.

Loose fit.

Size:
s/m-m/l.

Material:
Cotton 97% El 3%.

Handmade pattern design.

Each piece of clothing has a unique design since the placement of the design differs on each garment.

The model is 180 cm and is wearing a size S.



Kimono

Low cut V-Shaped neckline.

Button-fastenings through front.

Gold-toned metal buttons.

Side slits.

Size:
s/m-m/l.

Material:
Cotton 97% El 3%.

Handmade pattern design.

Each piece of clothing has a unique design since the placement of the design differs on each garment.

The model is 180 cm and is wearing a size S.



Three green

When you have company do
you need
to talk? If you talk,
does that
mean you have company?



Polo shirt

Polo collar.

Short sleeve.

Gold-toned metal buttons.

Size:
s/m-m/l.

Material:
Cotton 97% El 3%.

Handmade pattern design.

Each piece of clothing has a unique design since
the placement of the design differs on each garment.

The model is 180 cm and is wearing a size S.



Skirt

Long skirt.

Straight design.

Concealed zip fastening at back.

Front slit.

Size:

s-m-l.

Material:

Cotton 97% El 3%.

Handmade pattern design.

Each piece of clothing has a unique design since the placement of the design differs on each garment.

The model is 180 cm and is wearing a size S.



Top V

V-Shaped
neckline.

Button- fastening keyhole at back.

Gold-toned metal button.

Size:
s/m-m/l.

Material:
Cotton 97% El 3%.

Handmade pattern design.

Each piece of clothing has a unique design since
the placement of the design differs on each garment.

The model is 180 cm and is wearing a size S.



Trousers

Concealed zip.

One gold-toned
metal button fastening.

Loops.

Side slit pockets.

High waist.

Inner slit on the bottom.

Size: s-m-l.

Material:
Cotton 97% El 3%.

Handmade pattern design.

Each piece of clothing has a unique
design since the placement
of the design differs on each garment.

The model is 180 cm and is wearing
a size S.



Long Sleeve Shirt

Shirt-style collar.

Long sleeve with buttoned cuffs.

Button fastening on the front section.

Gold-toned metal buttons.

Size:
s/m-m/l.

Material:
Cotton 97% El 3%.

Handmade pattern design.

Each piece of clothing has a unique design since the placement of the design differs on each garment.

The model is 180 cm and is wearing a size S.



Zip Dress

Collar neckline.

Zip fastening at front.

Close fit at the waist .

Size:
s-m-l.

Material:
Cotton 97% El 3%.

Handmade pattern design.

Each piece of clothing has a unique design since the placement of the design differs on each garment.

The model is 180 cm and is wearing a size S.



Strapless Dress

Concealed zip fastening
at back.

Close fit at the waist .

Back slit.

Size:
s-m-l.

Material:
Cotton 97% El 3%.

Handmade pattern design.

Each piece of clothing has a unique design since
the placement of the design differs on each garment.

The model is 180 cm and is wearing a size S.



Dress

Low cut V-Shaped neckline.

Halterneck design.

Concealed zip fastening at back.

Close fit at the waist .

Back slit.

Size: s-m-l.

Material:

Cotton 97%E1 3%.

Handmade pattern design.

Each piece of clothing has a unique design since the placement of the design differs on each garment.

The model is 180 cm and is wearing a size S.



Shorts

Elasticated waistband.

Loose fit.

Size:
s/m-m/l.

Material:
Cotton 97% El 3%.

Handmade pattern design.

Each piece of clothing has a unique design since the placement of the design differs on each garment.

The model is 180 cm and is wearing a size S.



Tiny Top

V-Shaped neckline.

Button fastening on the back section.

Gold-toned metal buttons.

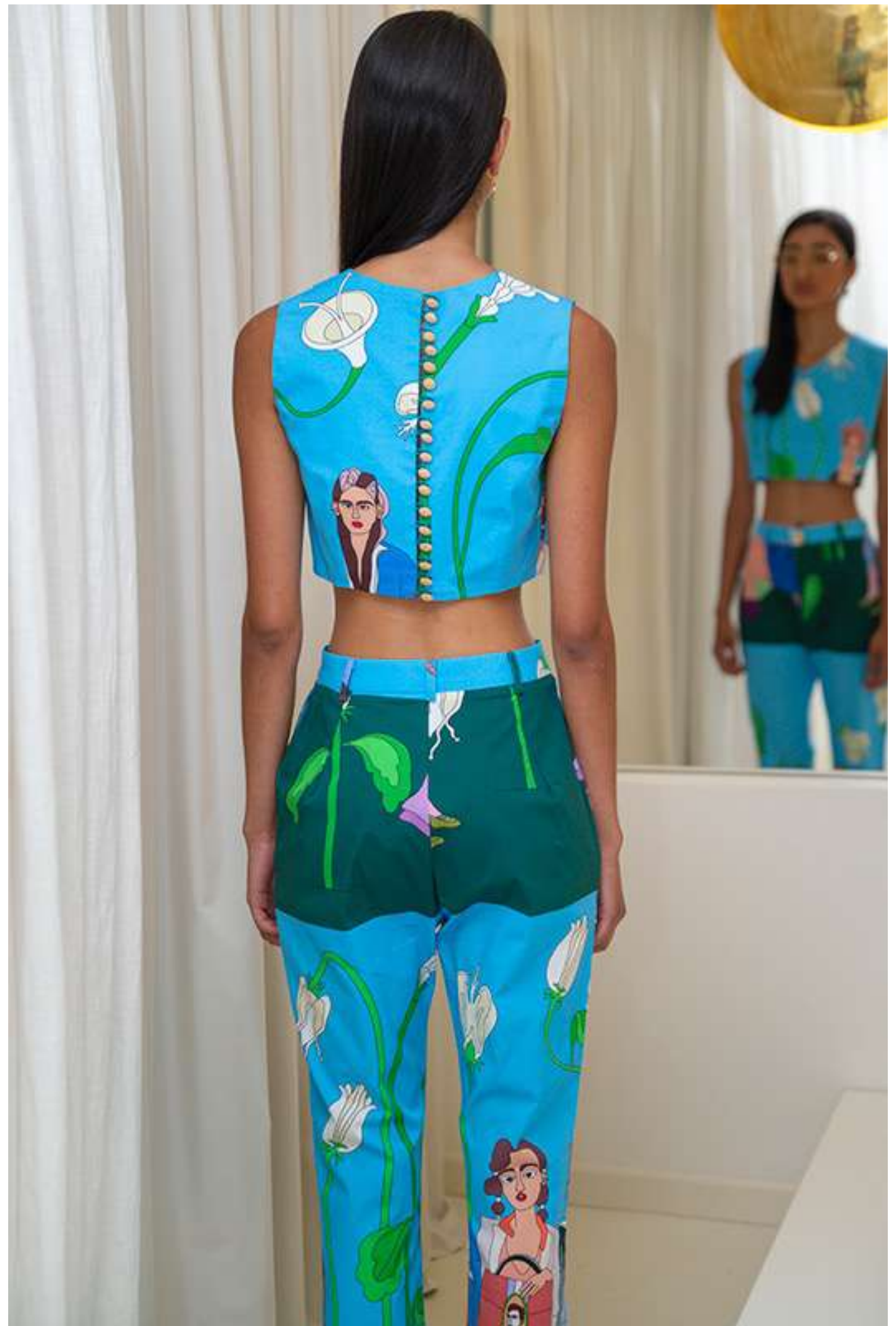
Size:
s-m-l.

Material:
Cotton 97% El 3%.

Handmade pattern design.

Each piece of clothing has a unique design since the placement of the design differs on each garment.

The model is 180 cm and is wearing a size S.



Playsuit

Low cut V-Shaped neckline.

Concealed zip fastening at front.

Slim fit.

Size:
s-m-l.

Material:
Cotton 97% El 3%.

Handmade pattern design.

Each piece of clothing has a unique design since
the placement of the design differs on each garment.

The model is 180 cm and is wearing a size S.



Shirt Dress

Shirt-style collar.

Long sleeve with buttoned cuffs.

Button-fastenings through front.

Gold-toned metal buttons.

Loose fit.

Size:
s/m-m/l.

Material:
Cotton 97% El 3%.

Handmade pattern design.

Each piece of clothing has a unique design since the placement of the design differs on each garment.

The model is 180 cm and is wearing a size S.



Kimono

Low cut V-Shaped neckline.

Button-fastenings through front.

Gold-toned metal buttons.

Side slits.

Size:
s/m-m/l.

Material:
Cotton 97% El 3%.

Handmade pattern design.

Each piece of clothing has a unique design since the placement of the design differs on each garment.

The model is 180 cm and is wearing a size S.





Pink island



Three Yellow



Three Green

Wholesale price :

Polo shirt · 52€

Skirt · 45€

Top V · 49€

Trousers · 49€

Long sleeve shirt · 61€

Zip Dress · 53€

Strapless Dress · 52€

Dress · 59€

Shorts · 32€

Tiny Top · 44€

Playsuit · 52€

Shirt dress · 80€

Kimono · 68€

Suggested retail price :

Polo shirt · 145€

Skirt · 125€

Top V · 137€

Trousers · 137€

Long sleeve shirt · 170€

Zip Dress · 148€

Strapless Dress · 145€

Dress · 165€

Shorts · 89€

Tiny Top · 125€

Playsuit · 145€

Shirt dress · 225€

Kimono · 190€



aenao

Founder/Designer
Ageliki Xynogala

www.aenaodesign.com

info@aenaodesign.com
sales.aenaodesign@outlook.com

@aenaodesign
+30 6936625728

Campaign Photographer : Antonina Andreadaki

Featured by :Ajaxnegi

Fashion Direction : Nefeli Litsaki

Make up Artist & Hair : Laida